

The Research Nook

Research in Reach

The Waypoint Research Institute and the PCFC are excited to announce our first **Research in Reach knowledge exchange day** at Waypoint. This event is open to all members of the Waypoint community who are interested in learning more about current research, quality improvement, data analytics, and other projects taking place at Waypoint.

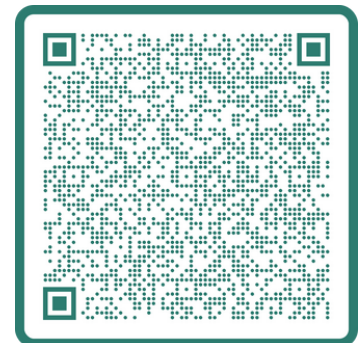
Key Details

- **Event date & time:** Tuesday, May 5th, 2026
 - *Morning session (registered):* 9:00am- 12:00pm
 - *Afternoon session (drop-in):* 1:00- 3:30pm
- **Location:** Atrium Auditorium (AT-0604)
- **Audience:** This event is open to all Waypoint staff, regional patients and outpatients
 - Staff are encouraged to coordinate with your manager if you would like to attend some or all of the event
 - Regional patients & outpatients will be supported by PCFC to attend the event
- **Presenters:** Staff from any department working across Waypoint who would like to showcase a recent or current project are encouraged to submit a presentation
- Light refreshments and snacks will be provided



Meaningful Patient Involvement

During our Research in Reach day, we encourage all researchers to engage with and support patient involvement as a way to strengthen patients' knowledge, build trust, and deepen relationships with research. Engaging patients as active participants honours their lived experience, builds confidence, and supports meaningful inclusion and shared learning. This collaborative approach enhances the relevance and impact of research and reinforces engagement as a pathway to healing, understanding, and sustained involvement in shaping services that affect their lives.



Abstract Submission is Open!

Learn more about abstract submissions by clicking here or scanning the QR code to the right. Important dates include:

- Abstracts close on **February 27th, 2026**
- Presenters will be notified of results on **March 20th, 2026**
- Presenters will confirm their acceptance by **April 2nd, 2026**

Apply now!

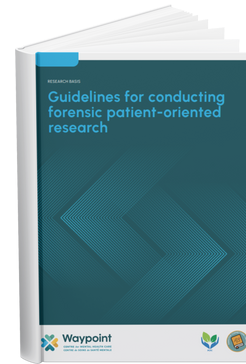
[Click or scan here](#) to access the abstract submission guidelines & application form.

What's New at the WRI

POR Guidelines and Handbook

How to do patient-oriented research in forensic settings

The forensic patient-oriented research (POR) team, led by [Dr. Christopher Canning](#), is pleased to share two new resources to support POR in forensic settings. The [Guidelines for conducting forensic patient-oriented research resource](#) are designed to provide a practical foundation for forensic POR based on evidence and acknowledged best practices. The practical handbook, [How to do patient-oriented research in forensic settings](#), looks at five important dimensions of forensic POR as well as core principles that are key to success. These resources can be found on the [Projects & Resources](#) section of our website.



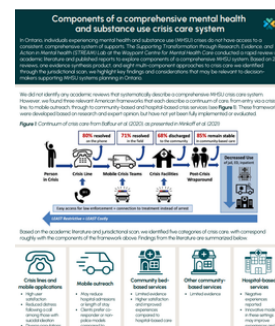
These resources aim to support participatory research practices in forensic mental health settings.

Explore STREAM's Resources

New Resources from the STREAM Lab

Explore recent projects from the [STREAM Lab](#) on the [Projects & Resources](#) section of our website, including:

- [Client experience measurement in Ontario mental health and substance use services](#)
- [Components of a comprehensive mental health and substance use crisis care system](#)
- [Engaging people with lived experience in mental health and substance use decision-making](#)



Explore more resources from the Supporting Transformation through Research, Evidence, and Action in Mental Health (STREAM) Lab on our [website](#).

Conferences & Events

Waypoint Talks

Previous Events

Click the links below to access the recordings from our previous sessions:

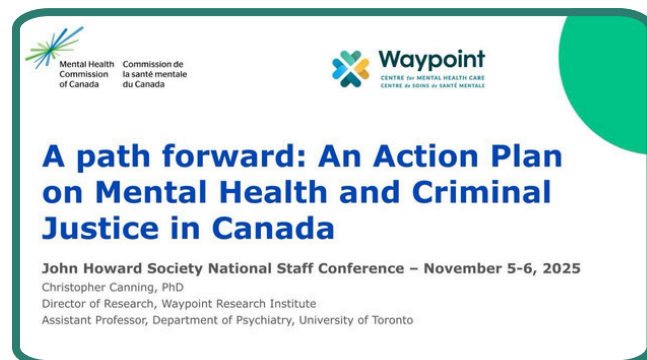
- [Mobilizing Evidence for Mental Health Decision Makers](#), hosted by the [STREAM Lab](#) in October 2025
- [Transformative Climate Action in Mental Health Organizations](#), hosted by [Dr. Carolyn Houilding](#) & [Dr. Barna Konkoly-Thege](#) in November 2025

Our Winter/Spring 2026 event schedule will be shared in the coming weeks. Have a suggestion for a speaker or topic? Feel free to email us your ideas at researchevents@waypointcentre.ca.

Recent Presentations

WRI staff have had the opportunity to present at several recent conferences and events, including:

- [Dr. Christopher Canning](#) gave a keynote address on, "*A path forward: An Action Plan on Mental Health and Criminal Justice in Canada*" at the John Howard Society National Staff Conference in Kelowna, BC
- [Dr. Cara Evans](#) presented on, "*Evidence-Informed Policy Considerations for Enhancing Substance Use Service Delivery in Rural Ontario*" at the Issues of Substance Conference in Halifax, NS
- [Dr. Salinda Horgan](#) presented on, "*Transforming health care, social care and community landscapes to optimize the mental health of older adults in Canada: the role of CCSMH in developing specific action plans*" at the 2025 CAGP-CCSMH Annual Scientific Meeting in Calgary, AB



[Dr. Christopher Canning's](#) keynote presentation on the National Action Plan, in partnership with the Mental Health Commission of Canada.

WRI Opportunities

Keep an eye on our [Careers Page](#), as we are continually offering exciting employment opportunities within the department!



Recent Publications

Zhao, J., Bumstead, B., [Junes, S.](#) [Canning, C.](#), & [Hilton, N.Z.](#) **Implementation research in forensic mental health: a scoping review.** *Implementation Science Communication* 6, 102 (2025).

<https://doi.org/10.1186/s43058-025-00772-3>

[Tang, F.](#), [Evans, C.](#), [Bogdan, A.](#), et al. **What is known about flexible assertive community treatment across populations and contexts? A scoping review protocol.** *BMJ Open* 2025;15:e096100.

[doi: 10.1136/bmjopen-2024-096100](https://doi.org/10.1136/bmjopen-2024-096100)

Chang, J., [Tamayo Velasquez, V.](#), [Waddell, A.](#) (2025). **"Trying to Do No Harm": exploring clinician concerns towards the use of AI for risk prediction in psychiatry.** *BMJ Digital Health & AI*. 1. e000078.

[10.1136/bmjdhai-2025-000078](https://doi.org/10.1136/bmjdhai-2025-000078)

[Imbeault, A.](#), [Crocker, A.](#), [Ham, E.](#), [Stafford, MC.](#) & [Hilton, N. Z](#) (2025). **Clinical subgroups of individuals receiving care in a forensic hospital: A 20-year comparison and treatment need implications.** *International Journal of Offender Therapy and Comparative Criminology*. <https://doi.org/10.1177/0306624x251391790>

[Mishra, N.](#), [Khalsa, P.](#), [Mishra, A.](#) **Tattoo Removal in Forensic Mental Health Settings: A Case for Advocacy.** *Cureus*. 2025 Oct 20;17(10):e94997. [doi: 10.7759/cureus.94997](https://doi.org/10.7759/cureus.94997)

Your Voice Matters!

We want your input. What stories or updates would you like us to profile in our next edition? If you have any suggestions or would like to contribute to writing for our newsletter, please email us at

waypointresearchinstitute@waypointcentre.ca

Waypoint Research Institute
Waypoint Centre for Mental Health Care
1st Floor, Bayfield Building
705-549-3181 Ext, 2142